

INSTRUCTIONS

Students match the words to the pictures.
Each card is related to a specific word family.



hat

rat

bat

mat

cat

sat

can

pan

van

fan

man

tan

cap

map

nap

gap

lap

sap

pad

bad

mad

dad

sad

bag

rag

tag

wag

jam	ham	ram	cab
lab	tab	jet	wet
vet	net	pet	pen
men	hen	ten	den
bed	red	wed	leg
peg	keg	sit	bit
kit	lit	hit	pit

kid

lid

hid

bid

big

dig

pig

wig

zip

lip

dip

rip

tip

hip

tin

bin

fin

pin

win

dog

jog

log

fog

cop

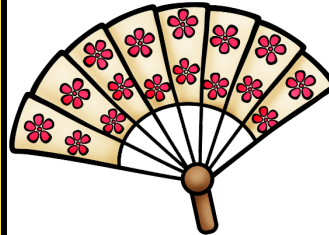
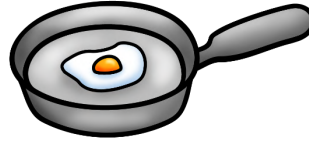
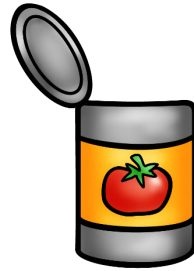
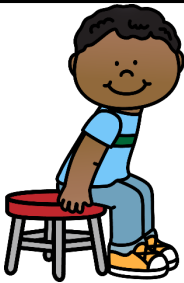
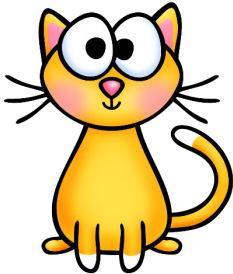
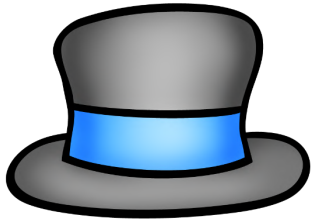
mop

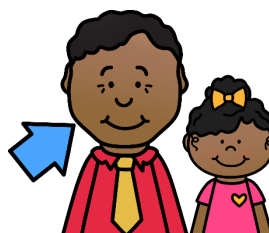
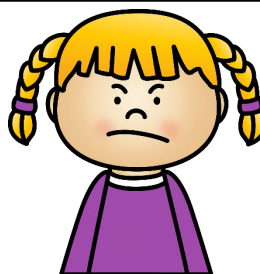
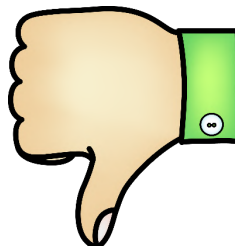
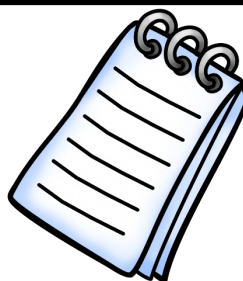
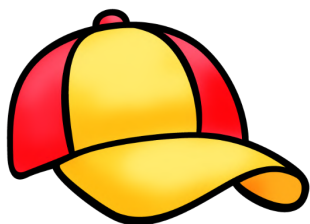
top

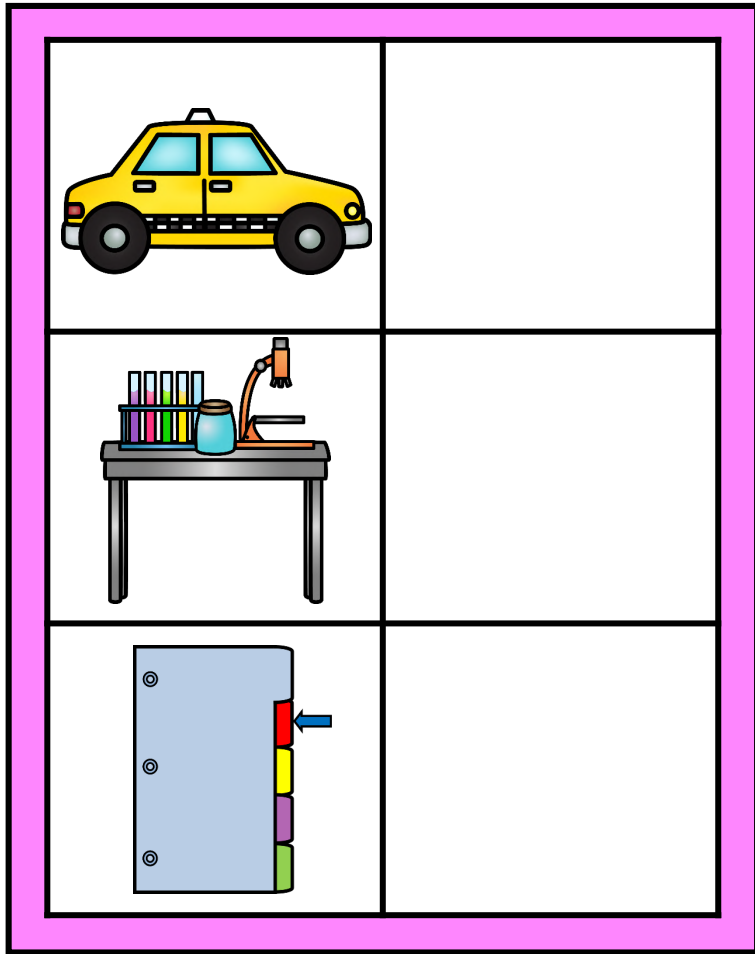
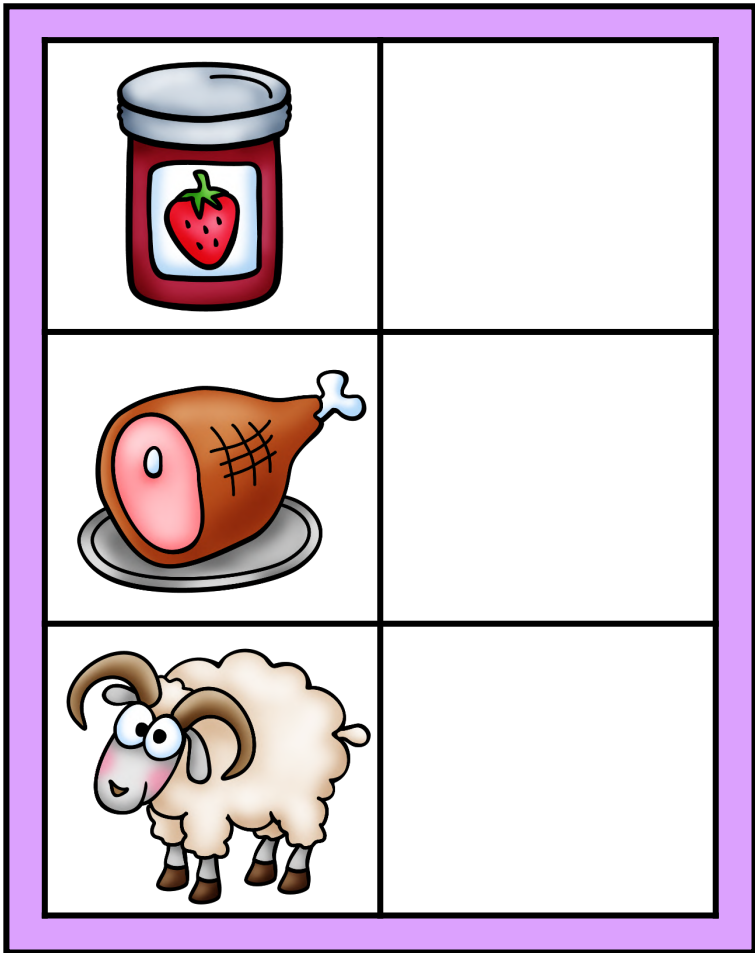
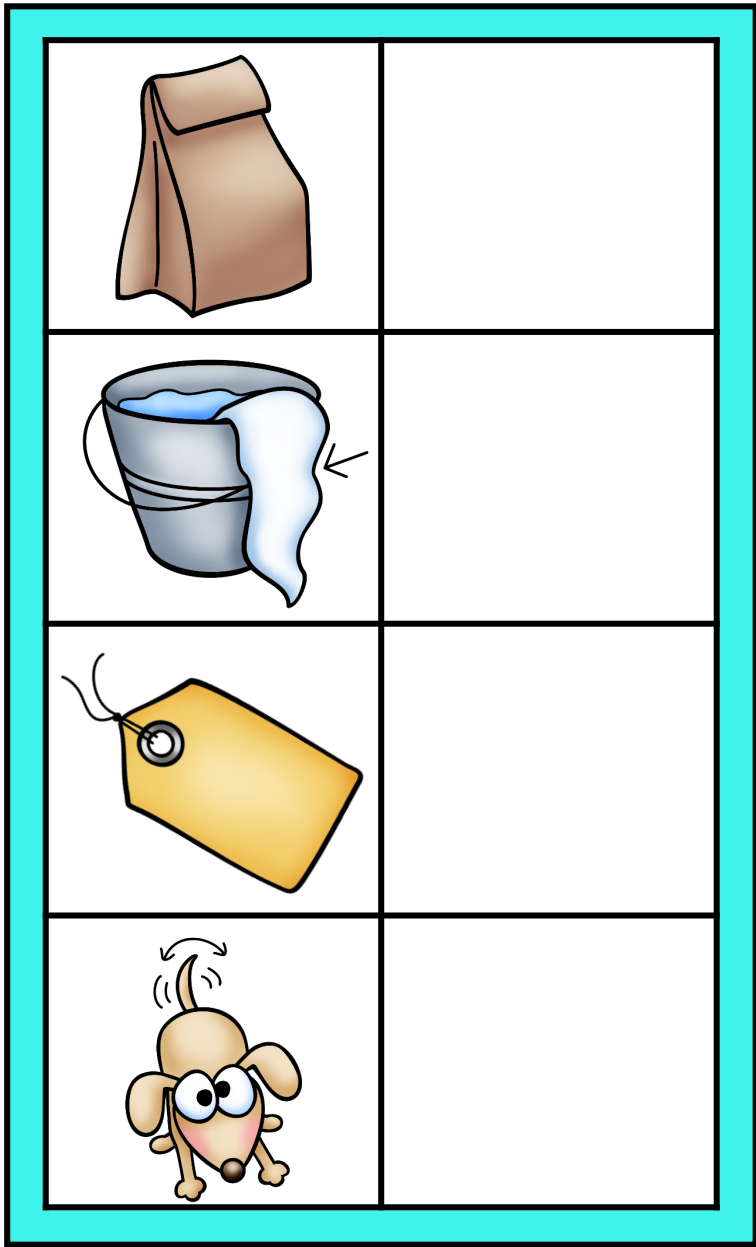
pop

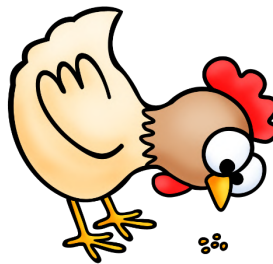
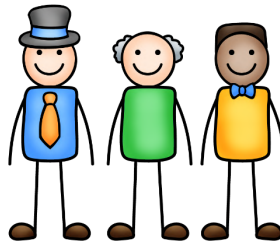
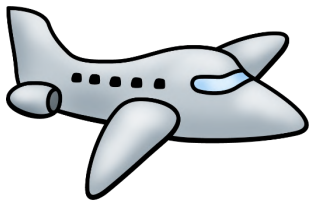
hop

cob	rob	sob	pot
dot	hot	cot	cut
hut	nut	bug	mug
jug	hug	dug	rug
run	sun	nun	bun
tub	cub	rub	sub









10



